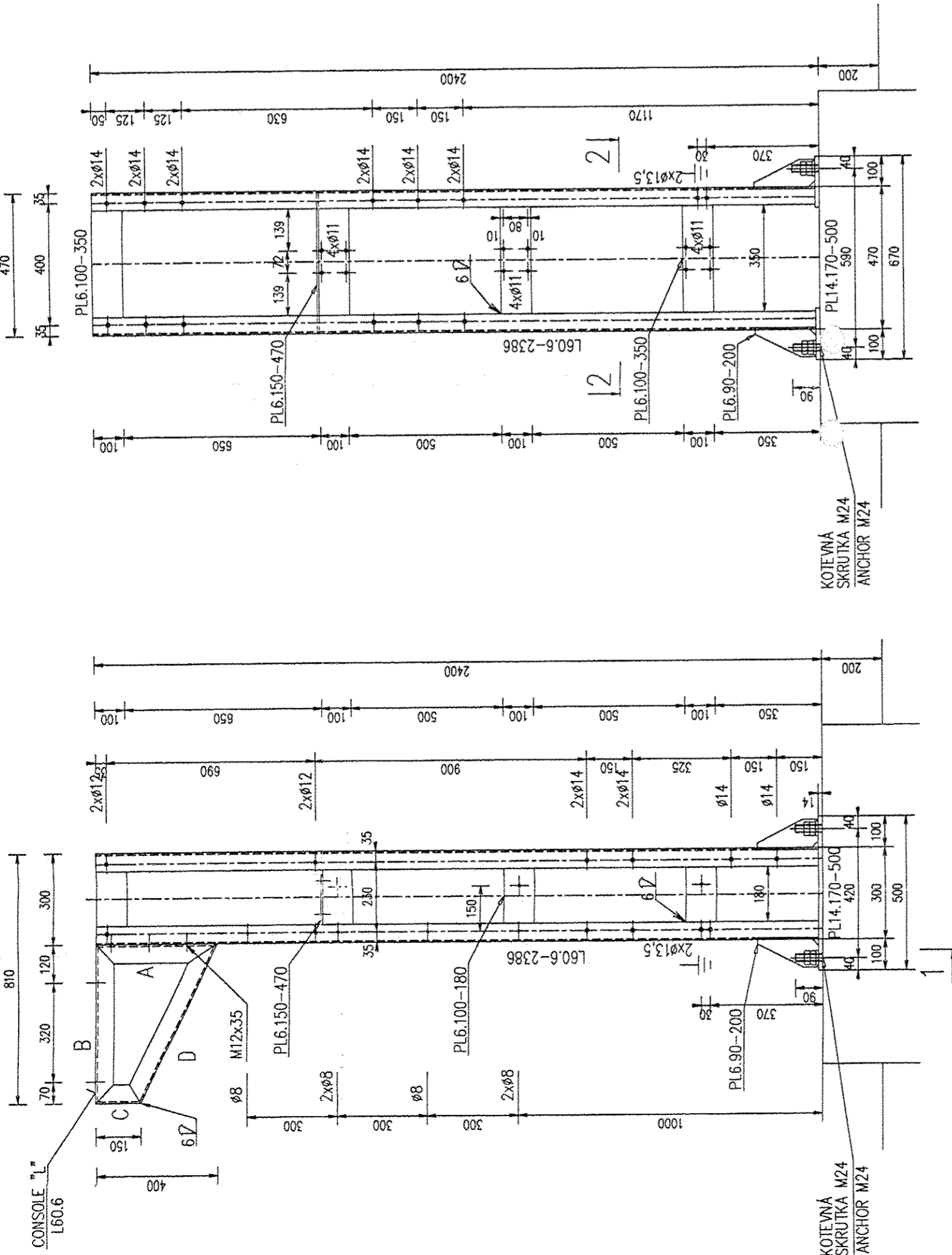
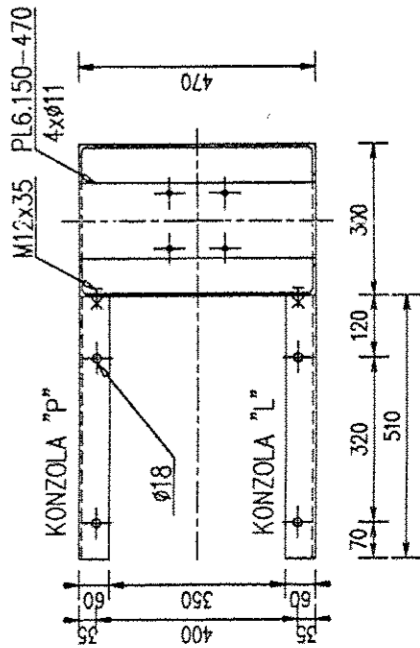


STOLIČKA POD KÁBLOVÚ KONCOVKU V RZ 110kV – T01 ,T02 – VYROBIŤ : 6 ks

REZ /SECTION 1-1



POHLAD/ VIEW P



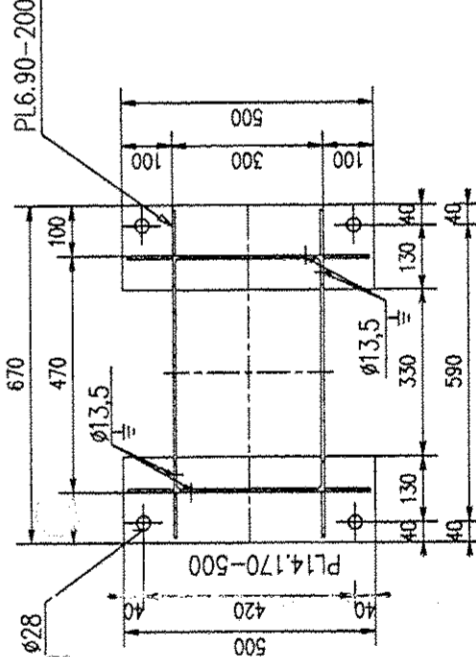
POZNÁMKA :

- CELÚ KONŠTRUKCIU ZINKOVAŤ!
- KONŠTRUKCIA JE NAVRHNUTÁ V ZMYSLE NORMY STN 73 1401
- VYROBNÁ SKUPINA B PODĽA NORMY STN 73 2601
- VŠETKY KUTOVÉ ZVARY : VÝŠKA ZVARU : \varnothing a=4mm

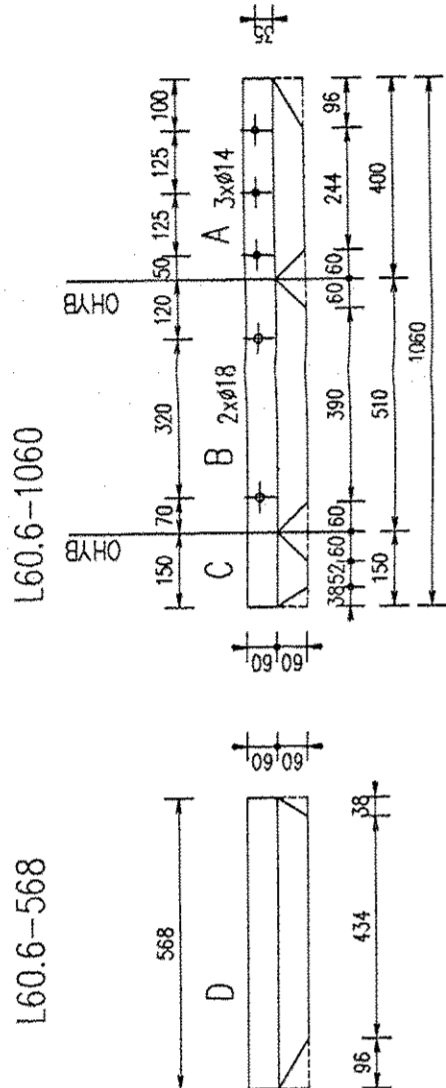
REMARKS :

- THE WHOLE SUPPORT IS HOT DIP GALVANIZED
- COMPLIES WITH THE STANDARD STN 73 1401
- GROUP B ACC. TO STANDARD STN 73 2601
- FILLET WELD : \varnothing a=4mm

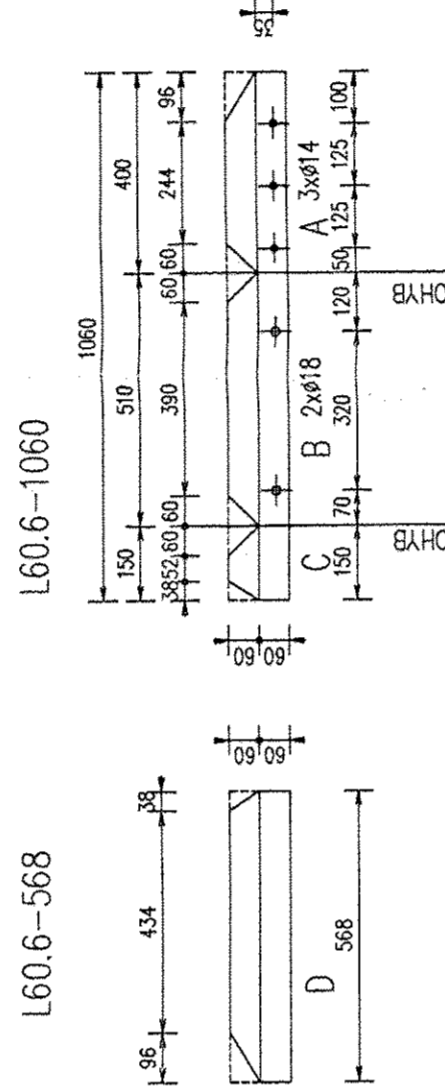
REZ/ SECTION 2-2



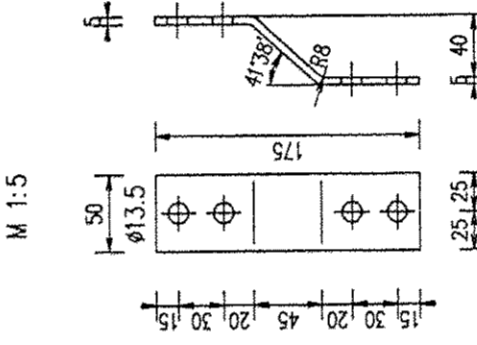
ROZVINUTÝ TVAR ĽAVEJ KONZOLY
LEFT CONSOLE (EXPANDED)



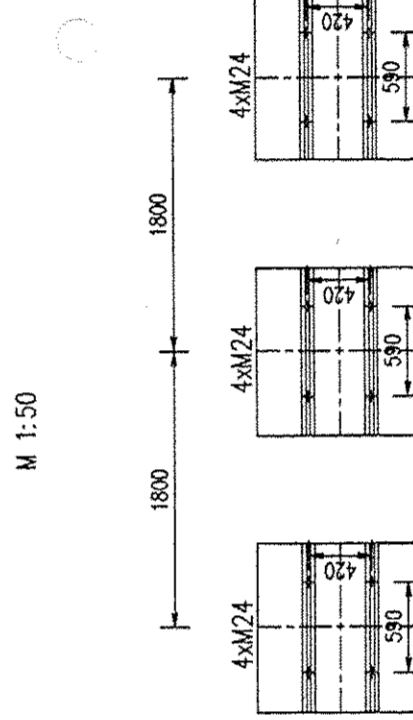
ROZVINUTÝ TVAR PRAVEJ KONZOLY
RIGHT CONSOLE (EXPANDED)



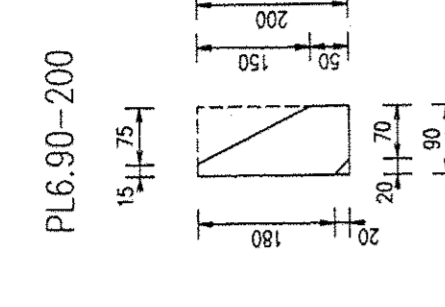
UZEMŇOVACÍ PRÁPOREČ
EARTHING



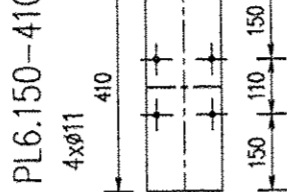
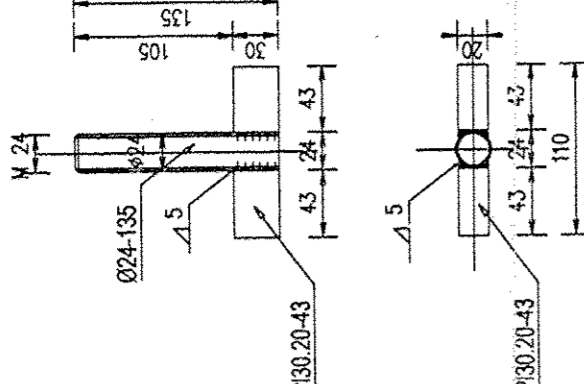
SCHEMA KOTVENIA STOLIČKY
BRACING OF THE SUPPORTS



VÝSTUHA STOLIČKY
BEAM



KOTEVNÁ SKRUTKA / ANCHOR
M24x135
M1: 5



CELKOVÁ HMOTNOSŤ / TOTAL WEIGHT : 125,0 kg

| | | | | |
|---|---|---------------|----------|--------|
| 8 | OCEĽ/ STEEL | PL30.20-43 | S 235 | 3,2 |
| 4 | OCEĽ/ STEEL | Ø24-135 | S 235 | 2,0 |
| 4 | PODLOŽKA HRUBÁ/ WASHER Ø26 | STN 02 1708 | 0,2 | |
| 8 | MATICA/ NUT M24 | STN 02 1601.1 | 2,0 | |
| 6 | PODLOŽKA PRUŽNÁ/ LOCKING WASHER Ø12,2 | STN 02 1741 | 0,1 | |
| 6 | PODLOŽKA HRUBÁ/ WASHER Ø14 | STN 02 1721 | 0,2 | |
| 6 | SKRUTKA S MATICOU/ SCREW WITH WASHER M12x35 | ON 02 1308 | 0,4 | |
| 4 | PODLOŽKA PRUŽNÁ/ LOCKING WASHER Ø12,2 | STN 021740 | 0,1 | |
| 4 | SKRUTKA S MATICOU/ SCREW WITH WASHER M12x35 | ON 021741 | 0,2 | |
| 1 | OCEĽ/ STEEL | PL5.50-195 | S 355 | 0,4 |
| 8 | OCEĽ/ STEEL | PL6.90-200 | S 355 | 6,8 |
| 1 | OCEĽ/ STEEL | PL6.150-470 | S 355 | 3,3 |
| 8 | OCEĽ/ STEEL | PL6.100-180 | S 355 | 6,8 |
| 8 | OCEĽ/ STEEL | PL6.100-350 | S 355 | 13,2 |
| 2 | OCEĽ/ STEEL | PL14.170-500 | S 355 | 18,7 |
| 2 | OCEĽ/ STEEL | L60.6-1628 | S 355 | 17,7 |
| 4 | OCEĽ/ STEEL | L60.6-2386 | S 355 | 52,0 |
| | | DESCRIPTION | MATERIAL | WEIGHT |

CE DOCUMENT, PROPRIÉTÉ DE L'AIR LIQUIDE, NE PAS COPIER
CE DOCUMENT NE PAS COPIER
This document, which is L'AIR LIQUIDE's property, may contain
information that is confidential and/or subject to patent law.
or disclosed to show the price value of L'AIR LIQUIDE

Elektrovod
Holding, a.s.

KOSICE

110kV CABLES

STOLIČKA POD KÁBLOVÚ KONCOVKU v=2400mm
STEEL SUPPORT FOR THE CABLE HEAD
HEIGHT 2400mm (T01, T02)

AIR LIQUIDE

ECHELLE
SCALE
1:15
N° D'AFFAIRE
JOB NUMBER
50-3023-01
GROUPE
GROUP
A1-761-512